

# ArizMATYC NEWS

VOLUME 7, No.1

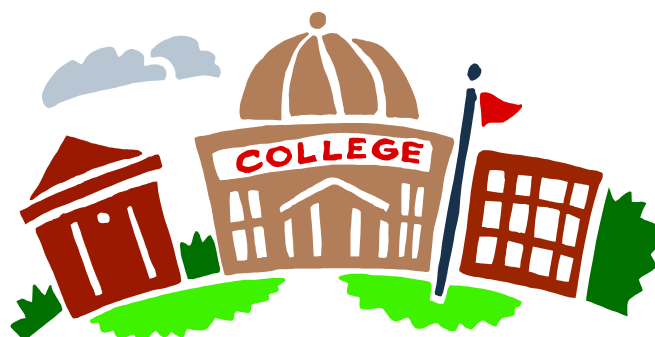
JANUARY 2009

## A Message from the ArizMATYC President

Another semester is underway, and we shoot out of the chutes ready to improve education again. We have great ideas to share with our students so that the content we teach will have better meaning to them. I have found that going to professional meetings like ArizMATYC helps me to stay focused on improving my teaching. I hope that you will come with a colleague or two and enjoy our next ArizMATYC gathering at Paradise Valley Community College on February 20, 2009. Enjoy your profession and share it with others!

*Ken Hurley*

ArizMATYC Spring Meeting  
Paradise Valley Community College  
February 20, 2009  
Watch the ArizMATYC website for details!



[www.arizmatyc.org](http://www.arizmatyc.org)

**EXECUTIVE BOARD**  
**2009**

**President**

Ken Hurley, Central AZ CC  
Kenneth.Hurley@centralaz.edu

**Past President**

Shay Cardell, Central AZ CC  
Cardell@theriver.com

**President-Elect**

Ana Jiménez, Pima CC  
ajimenez@pima.edu

**Treasurer**

Anne Dudley, Glendale CC  
Anne.dudley@gcmail.maricopa.edu

**Secretary**

Eli Blake, Northland Pioneer CC  
eblake@npc.edu

**Historian**

David Dudley, Scottsdale CC  
David.dudley@sccmail.maricopa.edu

**Web Master**

David Graser, Yavapai College  
David\_graser@yc.edu

Web page: [www.arizmatyc.org](http://www.arizmatyc.org)

**We need your news for the newsletter!** Mail articles to Sue Jensen at Pima Community College  
8181 E. Irvington Rd.  
Tucson, AZ 85709-4000

Or e-mail to  
[sjensen@pima.edu](mailto:sjensen@pima.edu)

**AMATYC Student Math League**

National and regional first-round results for the 2008-2009 Student Math League competition have been announced.

Arizona teams participating in Round 1 placed as follows in the Southwest Region:

|    |                            |       |
|----|----------------------------|-------|
| 1  | Pima Community College     | 126.5 |
| 3  | Glendale Community College | 96.5  |
| 6  | Mesa Community College     | 86.0  |
| 7  | Arizona Western College    | 84.5  |
| 14 | Phoenix College            | 51.5  |

Arizona students who scored highest in Round 1 ranked as follows:

|         |                |                 |
|---------|----------------|-----------------|
| 1       | Hari Subedi    | Pima            |
| 2 (tie) | Hai Nguyen     | Arizona Western |
| 2 (tie) | Dong Min Jang  | Pima            |
| 4       | Thanh To       | Glendale        |
| 7       | Kira Sund      | Pima            |
| 9       | Alan Passwater | Mesa            |
| 11      | Garrett Hawes  | Pima            |
| 20      | Alex Farrell   | Glendale        |

Congratulations to these individuals and to all who participated in the exam during the fall semester.

Now is the time to plan to participate in the 2009-2010 Student Math League competition. The cost to register your college team is \$35; the registration fee is waived if your college is an institutional member of AMATYC. A college moderator is required – someone who is willing to make a few photocopies, advertise and proctor the exam, and report the scores to the national moderator. Rules for the student competition and more information is available at the AMATYC website ([www.amatyc.org](http://www.amatyc.org)).

**ArizMATYC Meeting – Friday, October 3, 2008**  
**Eastern Arizona College – Discovery Park Campus**  
**Campus Reports**

**Eastern Arizona Community College:**

- New Discovery Park campus where the meeting was held
- Enrollment is growing
- Have been working on placement issues for a few years. Will have assessment data regarding Com pass next year.
- Tutoring program—hire students to tutor other students—working well
- Tech 7 program—Align curriculum from 7<sup>th</sup> grade to college

**Cochise Community College:**

- New president and executive vice president; new buildings around campus
- Changed 3 credit hour developmental course to 4 credit hour
- Have had 25% raises over the last 3 years

**Northern Arizona University:**

- Growing and building a lot; math department has grown 25% in the last few years
- 3 new lecturers, new math ed professor; will hire 3 new professors this year
- STA 275 Calculus for statistics is now going every fall
- NAU Teach—new math courses—will be education courses in a math context
- Using a free, online book for Calculus I

**Northland Pioneer College:**

- Using audio classes with SmartBoards at both sites so that the instructor and the students can all write on the SmartBoard
- Enrollment is up
- Looking at some textbook changes
- Accreditation visit next year
- Board member running for office

**Phoenix College:**

- New chair of the math department
- More extensive use of MyMathLab
- Day enrollment is up while night enrollment is down—possibly due to more online students

continued

## Fall 2008 Campus Reports, continued

### **Diné College:**

- Nothing new except looking for software for placement testing

### **Mesa Community College:**

- New president and V.P. of academic affairs; also, 15 new deans and above
- One new hire and hiring a math/engineering/computer science person
- Basic skills center in addition to tutoring center
- Developmental — running a hybrid online class with MyMathLab and tutors
- Critical analysis of what students can do using MyMathLab
- Administration is focusing on the developmental math problem.

### **Pima Community College:**

- Enrollment is up
- 2 retirees this year; 5 new hires district wide
- Possible new fulltime positions since adjuncts have been evaluated as not qualified; 18 graduate hours and master's degree in the field required
- Going to hybrid classes to save classroom space
- Downtown campus had a self-paced program that is now shut down — still deciding on replacement
- Might have to pay staff who are adjunct instructors 1.5 time if they work over 40 hours per week

### **Arizona Western College:**

- New construction is being finished — solar powered building — also science, administration, and student union buildings
- Math needs more room and more faculty
- Received \$3.5 million grant for remodeling a building with learning center, computer classrooms, etc.
- Enrollment is up
- 2 new faculty positions in grant and director of tutoring center

### **Yavapai Community College:**

- Emily Boone passed away last week
- Hiring new faculty to replace a teacher who went to NAU
- Looking at MyMathTest for placement
- Dual-enrollment is growing and enrollment is up

### **Glendale Community College:**

- New texts and using MyMathLab and WebAssign
- Encouraging students to buy the web book
- Enrollment is up; have some retirees
- Maricopa administration is focusing on developmental math problem

continued

## Fall 2008 Campus Reports, continued

### Coconino Community College:

- Need a building for donated telescope, dome; board member who is an astronomer is working on it
- Want to split the math/science department into two departments; asking for new math position
- Changing developmental sequence into 4 classes; added Prealgebra
- Math tutorial class in the spring (like Glendale's)
- Looking at placement scores; chose new books for developmental
- Second year of new president and shared governance

### Scottsdale Community College:

- 20 full-time math faculty; 1 retiree at the end of this year
- Students not going to MWF classes as much
- Enrollment of college is down while enrollment in math is up
- New president from Alaska; 1 year of VP of Academic Affairs
- Align topics in developmental classes

### Central Arizona Community College:

- Shay Cardell retired last year; another faculty person resigned; 3 new instructors
- New district-wide model schedules start times the same across campuses
- MW and TR classes help with gas prices, not many MWF classes
- Want to host a forum of community colleges around the state
- Trying out math tutorial program
- Asking for 2 new faculty

### Mohave Community College:

- New administration
- Hired expert to redo developmental level classes — didn't work out well
- Math department still working on replacement plan; back to 7 math faculty but hope to have 8 soon
- Enrollment is up

No campus reports were received from Chandler-Gilbert CC, ASU (Tempe), ASU (West), UA, Tohono O'odham CC, South Mountain CC, Rio Salado CC, Paradise Valley CC, Grand Canyon U, Gateway CC, Estrella Mountain CC, Embry Riddle Aeronautical U.

**ArizMATYC Business Meeting**  
**Eastern Arizona College, Discovery Park Campus**  
**Friday, October 3, 2008**

Meeting convened at 1:50 pm.

**I. Reports**

- A. Secretary: This is Jennifer Jameson's last meeting as secretary; she will email minutes to the listserv and upload to website
- B. Treasurer: \$490 income from Spring meeting; paid out \$500 for AMATYC in MN, help for New Orleans delegates, D.C.; normal Fall expenses (Student Math League \$500, delegate expense \$1260); lead ATF members will pay ArizMATYC membership (\$5/year) - moved, seconded, approved; send reminder card with Spring date and membership expiration date; \$15 per conference (either one will pay for 1-year membership only); made \$210 at this conference; won't need to pay for Dan Russow's registration at AMATYC as it is already paid.
- C. Historian: Founders of ArizMATYC were Betty Field and Ed Chandler in 1983, not the Dudleys
- D. Other: No other reports.
- E. Teaching Award: We want to nominate Shay Cardell — other nominations are welcome.

**II. Old Business: None**

**III. New Business:**

- A. Nominations for 2-year terms beginning in January 2009: President-elect: Ana Jiménez; Secretary: Eli Blake; Treasurer: Anne Dudley; moved, seconded, approved o elect by e-mail vote of entire Ariz-MATYC membership.
- B. Webmaster will be David Graser; appointed position, so not elected
- C. Shay Cardell can remain as Past President for two years

**IV. Election of Delegates:**

- A. State delegates: David Dudley, Ana Jiménez
- B. Affiliate delegates: Jennifer Jameson, Ken Hurley
- C. Question: can an institutional member be a delegate — Kate will check into this on Monday.
- D. Moved, seconded, and approved to have Jennifer Jameson be one-year delegate to replace Shay Cardell
- E. Spring agenda must include election of two new state delegates
- F. What do state delegates do? Kate will check on this in policies and procedures

**V. Future Meetings**

- A. Spring 2009: Paradise Valley CC (back-up: Mesa CC) - February 20
- B. Fall 2009: Coconino CC
- C. Spring 2010: Scottsdale CC (joint meeting with MAA)
- D. Fall 2010: Pima CC
- E. Spring 2011: Arizona Western College

continued

## ArizMATYC Business Meeting Minutes, continued

### VI. Other Business

A. STEM Transitions: [www.stemtransitions.org](http://www.stemtransitions.org); League of Innovation — free resources for community colleges

B. Discussion about future ArizMATYC meetings

- Pros: Nice to have meetings as well as sessions, roundtables, etc, and to go to other campuses
- Cons: Dwindling attendance at meetings; travel costs are too much for people; book vendors may not come to outlying areas
- Recommendations:

Have Fall meeting with a lot of ATF stuff and Spring meeting with some ATF and more sessions, or vice versa. Or have ATF at only one meeting and full program of sessions at the other.

Have Fall meetings in Maricopa for ATF, other places in the Spring

Have plans for other attendees during the ATF and Business meeting

Move campus reports after ATF meeting: ATF 8-10 am, ArizMATYC starts at 10 am

Have an open discussion right after the campus reports

Business meeting at 1:00 pm

We need to come up with a schedule to give to organizers

Registration and food, etc in the book room

Mailings of nice brochures to get more attendance. Send this type of mailing to members and to departments. ArizMATYC might be able to pay for some of the costs of creating a brochure.

Try this for Fall 2009 conference at CCC. Motion to provide \$500 to CCC to help raise attendance, seconded, approved

Designate people on the board to help with planning

Encourage conference themes centered around the location of the meeting/conference

Ask members to bring someone with them to the next meeting

Survey what people liked about these meetings in years past

Advertise what ArizMATYC can do for its members

Make an online Camtasia tutorial to send out to members to teach members different things

- Ideas for Sessions:

Try Debra Rader from the P-20 council

Schedule moderators for panel discussions on placement (e.g. Aleks, Accuplacer, MyMathTest)

Developmental math roundtable; other discussion roundtables

Poll members about expertise and what they could present

Possibly give hosts money to help get speakers

Need ideas for finding speakers: NAU speakers bureau, textbook authors, consultant who went to NAU about placement, keep eyes open at AMATYC conference for possible speakers, Glen Hurlberg (ASU faculty)

Ask colleges to fill a slot for a talk. For Fall 2009 will ask Mesa CC and Yavapai CC

Maybe a hands-on Camtasia training

Maybe someone from a testing center and/or legal issues about placement

continued

## ArizMATYC Business Meeting Minutes, continued

- Tasks:

David Graser will put new book-buyer law on web page

Need to put all of these ideas for conference planning, how to find speakers, and a schedule template on the website

Possibly have a wiki about hosting conferences

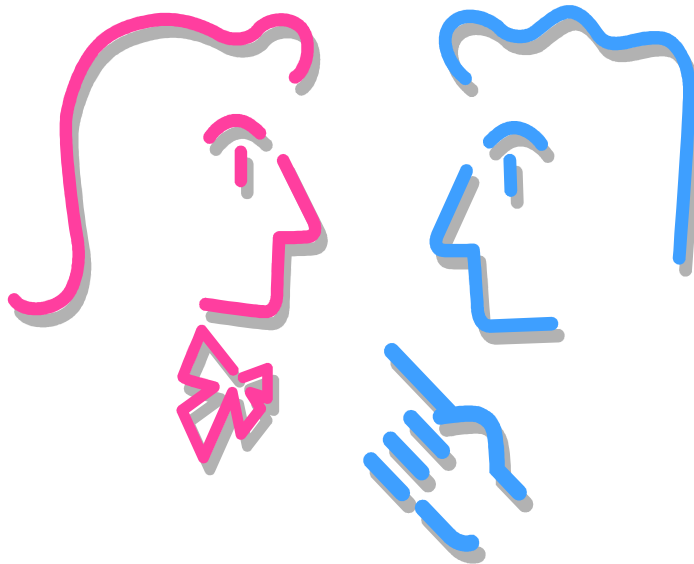
Dan Russow and Anne Dudley will be mentors for the Paradise Valley CC conference on 2/20/09

Maybe the theme should be placement

Meeting adjourned at 3:30pm.

Respectfully submitted,

Jennifer Jameson, Secretary



### YOU Can Help to Strengthen ArizMATYC!

Are all of your colleagues ArizMATYC members? If some are not, encourage them to join now. Send name, college, contact information, and \$5 to

Anne Dudley, ArizMATYC Treasurer

Glendale Community College

6000 West Olive Avenue

Glendale, AZ 85302

Questions about ArizMATYC? Call Anne at 623-845-3389



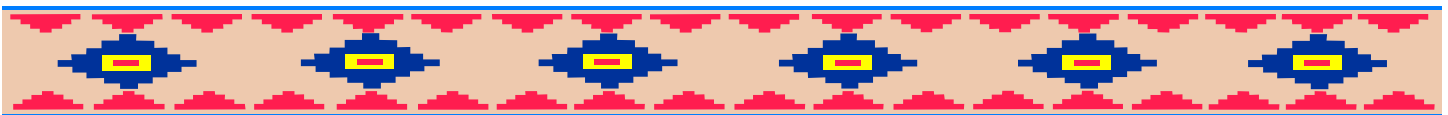
## How the 2008 AMATYC Conference is Helping a Developmental Program

Jennifer Jameson, Coconino Community College

Coconino Community College was able to send two faculty members to the 2008 AMATYC conference in Washington D.C. Kate Kozak and myself, Jennifer Jameson, attended the conference and had a marvelous time. The sessions were informative, the vendors were helpful, the company was fun, the food was good and the weather was cold, really cold. Although we did take some time to see some monuments and museums and ride the Metro, our main focus at the conference was developmental math. It certainly seemed to be a hot topic at the conference as well as at the ArizMATYC meetings lately.

When talking to instructors from Arizona and other places around the country I heard many people describe the difficulties with helping students to succeed in developmental math courses. Some of the common problems are related to student frustrations with having to take so many developmental math courses. Also, students become discouraged when they have to retake a course because they were unsuccessful. So Kate and I set out to learn as much as possible about how to help developmental students succeed and the AMATYC conference delivered. There were many sessions focused on developmental students such as study skills, math literacy and reading a math textbook, activities for different learning styles, redesigning developmental course delivery, teaching the millennial generation, and placement testing. All of these sessions were informative and have helped us to develop some new ideas for developmental classes at CCC.

We have changed our curriculum to have less topic overlap from course to course. This way we can have more time to devote to each topic but we will be putting more responsibility on the student for reviewing past material. We are going to give MyMathLab a try again. We used it before but were not completely happy with it; however, with the changes they have made, we feel it may be a good fit for our developmental classes now. We are implementing a new class this semester called Tutored Developmental Mathematics. This is basically a study hall class that we heard about from Glendale Community College. A few presenters at the AMATYC conference also mentioned variations of this idea of having students sign up for a class that is separate from their actual math class where they will receive tutoring. Our Tutored Developmental Mathematics will be a two credit hour course that will be offered once a week. During the first 15 to 20 minutes we will present information to the class about study skills, learning styles, time management, how to create helpful notebooks and note cards, test-taking techniques and so on. Then, the rest of the class will be devoted to small group tutoring conducted by an instructor who will oversee the class and additional tutors that will work with the groups. We are excited about these changes and look forward to conferring with ArizMATYC members sometime regarding these ideas and others that can help our developmental students succeed.



Mark your calendar now !

35th Annual National AMATYC Conference

November 12-15, 2009

Las Vegas, Nevada

Go to [www.amatyc.org](http://www.amatyc.org), or follow the link on the ArizMATYC web page to learn more about the conference:  
[www.arizmatyc.org](http://www.arizmatyc.org)